

# MONTHLY MEMBERSHIP PROGRESS REPORT

LOCATION OHIO

District 13 OH4

Results as of: 6/30/2023

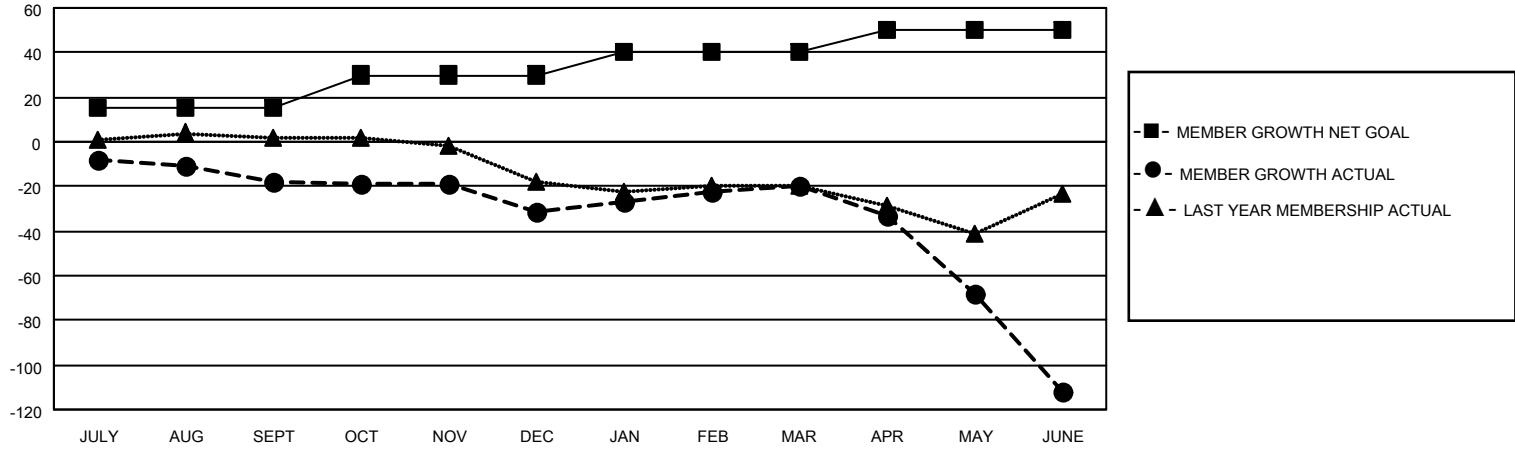
Clubs			
RESULTS FOR 2022-2023			
QUARTER	NEW CLUB GOAL	NEW CLUBS	DROPPED CLUBS
JULY/AUG/SEPT	1	0	0
OCT/NOV/DEC	1	0	0
JAN/FEB/MAR	1	0	0
APR/MAY/JUNE	1	0	3

Members			
RESULTS FOR 2022-2023			
QUARTER	MEMBER GROWTH NET GOAL	MEMBER GROWTH ACTUAL	DROPPED MEMBERS ACTUAL (including transfers)
JULY/AUG/SEPT	15	25	41
OCT/NOV/DEC	15	30	38
JAN/FEB/MAR	10	34	20
APR/MAY/JUNE	10	51	127

**GOALS AND ACTUAL NEW CLUBS CUMULATIVE**



**GOALS AND ACTUAL MEMBERS CUMULATIVE**



DROPPED CLUBS: 3	
<u>DROPPED MEMBERS</u>	
DECEASED	31
CLUB CANCELLED	22
OTHER	173
<b>TOTAL</b>	<b>226</b>

34 CLUBS OF 52 ADDED 1 OR MORE NEW MEMBERS

[CLICK HERE FOR CUMULATIVE MEMBERSHIP DATA](#)

<u>GENDER DISTRIBUTION</u>	
MALE	805 (63.34%)
FEMALE	465 (36.59%)
NON BINARY	0 (0.00%)
PREFER NOT TO ANSWER	1 (0.08%)
<b>TOTAL FAMILY UNIT MEMBERS</b>	<b>244</b>
<b>FAMILY MEMBERS PAYING HALF DUES</b>	<b>124</b>